

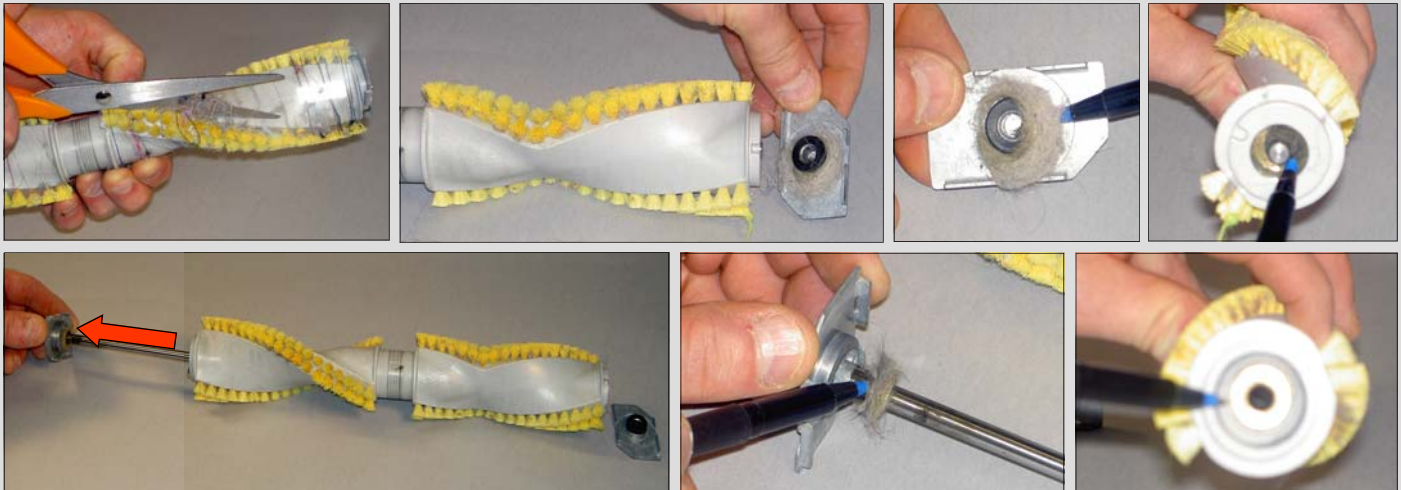
Cleaning Your TurboCat® Zoom Brush Roller

Step 1: Remove Baseplate and Brush Roller



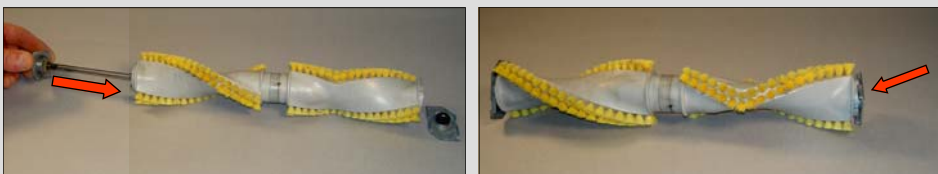
- Turn off the vacuum system, disconnect the powerhead and place it upside down on a towel. The towel protects the unit and holds it steady. Remove the three baseplate screws (photo 1).
- Lift off the baseplate as shown (photo 2).
- Remove the clear plastic belt cover (photo 3).
- Remove the Brush Roller assembly by lifting it out of the housing as shown (photo 4).

Step 2: Clean Brush Roller and Shaft Supports



- Cut threads and hair with scissors (photo 1, top).
- Remove metal shaft support as shown (photo 2, top).
- Remove hair from shaft support with pick, tweezers or fingers (photo 3, top).
- Remove any hair from inside Brush Roller end too (photo 4, top).
- Remove roller shaft (from opposite end of the Brush Roller) by sliding it out (photo 1, bottom).
- Remove hair from shaft support end (photo 2, bottom).
- Check to ensure the Brush Roller end is clean (photo 3, bottom).

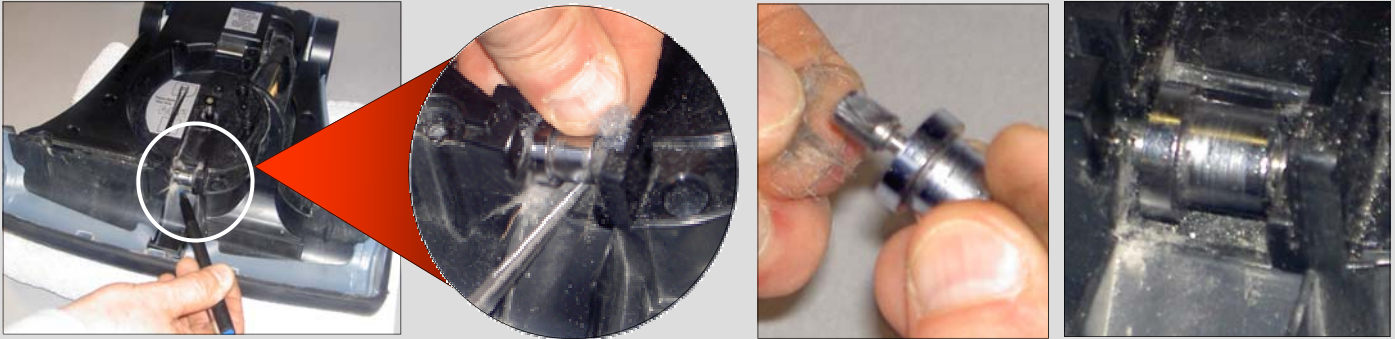
Step 3: Reassemble Brush Roller and Shaft Supports



- Reassemble shaft into Brush Roller (photo 1).
- Reattach the metal shaft support (photo 2).

Cleaning Your TurboCat® Zoom Brush Roller *(continued)*

Step 4: Clean Brush Roller Bearing



- Remove the Brush Roller bearing with the tip of a screwdriver (photo 1 and inset).
- Clean ends of the bearing (photo 2).
- Snap bearing back into place as shown (photo 3).

Step 5: Reassemble Brush Roller and Baseplate



- Slip belt onto Brush Roller (between the two center flanges), and loop belt around the belt shaft as shown (photo 1, top).
- Ensure belt is twisted correctly by comparing it to the label (photo 2, top).
- Slide Brush Roller securely into housing (photo 3, top).
- Replace baseplate by inserting its tabs into the corresponding slots in the housing (photo 1, bottom).
- Angle the baseplate into proper position (photo 2, bottom).
- Secure baseplate with three screws (photo 3, bottom). You're finished!